

Smart Card Readers

iRox™ Series

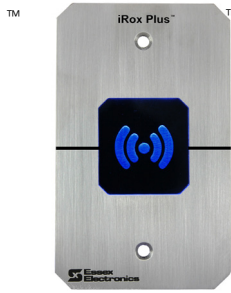
iRox™ and iRox Plus™ are heavy duty smart card readers with Genuine HID Technology™. Designed to interface with most access control panels, iRox Series readers feature a rugged metal faceplate, epoxy encapsulated electronics, customizable graphics in a recessed vandal resistant design.



NEW



IRX-1B



IRXP-2

- High Frequency or Dual Frequency Wiegand Reader with Genuine HID Technology™
- iCLASS SE® (13.56MHz) or MultiCLASS SE® (13.56MHz and 125KHz)
- 1/8" Stainless Steel or Black Anodized Aluminum Faceplate
- 5 or 12VDC Field Selectable Input Voltage
- Current Draw: 90mA Standby, 300mA max
- IP 66 Rated, 100% Relative Humidity
- - 40° C to +70° C (- 40° F to + 160° F)
- Dimensions: Mullion 4 1/2" x 1 3/4" x 3/4"
- Single gang 4 1/2" x 2 3/4" x 3/4"
- Bicolored Visual and Audio Feedback
- Designed and Manufactured in the U.S.A.



Custom Graphics

Part No.	Description
IRX-1	Narrow Style iRox™ iCLASS SE® Reader Stainless Steel Faceplate
IRX-1B	Narrow Style iRox™ iCLASS SE® Reader Black Aluminum Faceplate
IRX-2	U.S. Single Gang iRox™ iCLASS SE® Reader Stainless Steel Faceplate
IRX-2B	U.S. Single Gang iRox™ iCLASS SE® Reader Black Aluminum Faceplate
IRXP-1	Narrow Style iRox Plus™ MultiCLASS SE® Reader Stainless Steel Faceplate
IRXP-1B	Narrow Style iRox Plus™ MultiCLASS SE® Reader Black Aluminum Faceplate
IRXP-2	U.S. Single Gang iRox Plus™ MultiCLASS SE® Reader Stainless Steel Faceplate
IRXPB-2	U.S. Single Gang iRox Plus™ MultiCLASS SE® Reader Black Aluminum Faceplate



Proximity Readers

RoxProx™ Series

RoxProx™ is an extreme duty 125 kHz Proximity reader with Genuine HID Technology™. RoxProx features rugged metal construction, epoxy encapsulated electronics and a low profile, vandal resistant design.

- 125kHz Wiegand Proximity Reader with Genuine HID Technology™
- 1/8" Stainless Steel or Black Anodized Aluminum Faceplate
- 5 or 12VDC Autodetect Input Voltage
- Current Draw: 50mA Standby, 150mA max
- IP 66 Rated - 40° C to +70° C, 100% Relative Humidity
- Dimensions: Mullion 4 1/2" x 1 3/4" x 3/4" Single gang 4 1/2" x 2 3/4" x 3/4"
- Limited Lifetime Warranty

NEW

RoxProx II™



PRX-1



PRX-2R



PRX2-2B



Part No.	Description
PRX-1	RoxProx™ Narrow Proximity Reader Stainless Steel Faceplate, Blue Globe
PRX-2	RoxProx™ Single Gang Proximity Reader Stainless Steel Faceplate, Blue Globe
PRX-1R	RoxProx™ Narrow Proximity Reader Stainless Steel Faceplate, Red RFID
PRX-2R	RoxProx™ Single Gang Proximity Reader Stainless Steel Faceplate, Red RFID
PRX2-1	RoxProx II™ Narrow Proximity Reader Stainless Steel Faceplate, Blue Globe
PRX2-1B	RoxProx II™ Narrow Proximity Reader Black Aluminum Faceplate, Blue Globe
PRX2-2	RoxProx II™ Single Gang Proximity Reader Stainless Steel Faceplate, Blue Globe
PRX2-2B	RoxProx II™ Single Gang Proximity Reader Black Aluminum Faceplate, Blue Globe

Custom Graphics



CARD-1326

Keypad Readers

KTP Series

The KTP Series are virtually indestructible Keypad readers designed to interface with most access control panels. Built with Essex Piezoelectric Switch Technology™, the KTP Series can be used in virtually any interior or exterior environment.

- Superior Performance: Switch technology tested over 1 Billion cycles.
- All Weather: IP66 Rated, - 40° C to +70° C (- 40° F to + 160° F), 100% Relative Humidity



KTP 12 Pad 3x4

- Dimensions: 5 1/8" x 3 3/4" x 7/16"
- Current Draw: < 20 mA
- Mounting: Single gang, surface or flush
- Keypad Bezel: Stainless Steel (SN), Black (KN) or no Bezel (XX)

Part No.

KTP-103-SN

KTP-163-SN

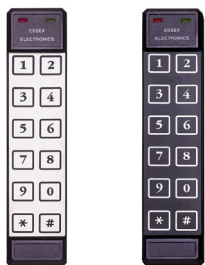
KTP-4853-SN

Keypad Output

26 Bit Wiegand

8 Bit Word

RS-485



KTP Thinline 2x6

- Dimensions: 7 1/8" x 1 3/4" x 3/4"
- Current Draw: < 20 mA, Illuminated: < 60 mA
- Mounting: Surface or mullion mount
- Keypad Overlay: Stainless Steel (SN) or Black Illuminated (LI)

Part No.

KTP-102-SN

KTP-162-SN

Keypad Output

26 Bit Wiegand

8 Bit Word



Combination Keypad/Card Readers

PiezoProx®

PiezoProx is a rugged dual technology access control reader which combines an Essex 3x4 Keypad with 125 kHz HID Proximity. PiezoProx is designed for harsh or vandal prone environments where a dual method of identification is desired.



- Genuine HID Technology™
- IP66 Rated, - 40° C to +70° C, 100% Relative Humidity
- Keypad Output: 26 Bit Wiegand (103) or 8 Bit Word (163)
- Keypad Bezel: Stainless Steel (SN) or Black (KN)
- Current Draw: < 80mA with LED's, < 35mA without LED's
- Mounting: Single gang switchbox or surface mount
- Dimensions: 7 1/4" x 3 5/8" x 1 1/2"

Part No.

PPH-103-SN

PPH-163-SN

Description

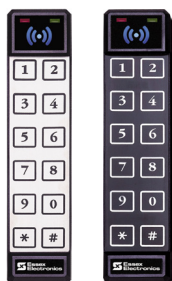
PiezoProx® Reader HID Proximity w/26 Bit Wiegand Keypad, Stainless Bezel

PiezoProx® Reader HID Proximity w/8 Bit Word Keypad, Stainless Bezel



T-Prox™

T-Prox is a dual technology access control reader which combines an Essex Thinline 2x6 Keypad with HID 125 kHz Proximity. Suitable for all indoor and outdoor applications, T-Prox is specifically designed for mullion mount installations to provide a dual method of identification.



- Genuine HID Technology™
- IP66 Rated, -40° C to +70° C, 100% Relative Humidity
- Keypad Overlay: Stainless Steel (S) or Black Illuminated (I)
- Current Draw: < 30mA, Illuminated < 100 mA
- Mounting: Surface or mullion mount
- Dimensions: 7 1/8" x 1 3/4" x 3/4"

Part No.

TPX-26S

TPX-26I

Description

T-Prox Reader – Thinline 2x6 Keypad w/HID Proximity, Stainless Overlay

T-Prox Reader – Thinline 2x6 Keypad w/HID Proximity, Black Illuminated Overlay



Access Control

All Weather Keypad • Request to Exit • Latching • Anti Tailgating • Tamper Alarm • Programmable Output Time • Non Volatile Memory

SKE-34/SKE-26 Multiple User, Self Contained, Access Control Keypad



- 500 User
- 12-24VDC In/Out
- 3 Programmable Outputs
- 1 SPDT Relay (2 amp at 24V max)
- Keypad Programmable
- 2 Auxiliary Open Collector Outputs (¼A)
- 3x4 Bezel: Stainless (S) or Black (K).
- 2x6 Overlay: Stainless (S) or Black Illuminated (I)

<u>Part No.</u>	<u>Description</u>
SKE-34S	SKE-34, 3x4 Keypad Stainless
SKE-34K	SKE-34, 3x4 Keypad Black
SKE-26S	SKE-26, 2x6 Keypad Stainless
SKE-26I	SKE-26, 2x6 Keypad Black



K1



All-In-One, Multi Format Keypad Reader (26 Bit Wiegand, 8 Bit Word, BCD, Serial ASCII)

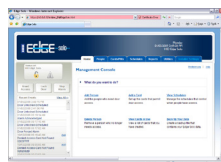
Field configurable as an OEM Compatible Reader or 500 User Keyless Entry System (*may require external relays)

- 5VDC or 12-24VDC In/Out
- 3 Programmable O.C. Outputs
- Keypad Programmable
- 3x4 Bezel: Stainless (S) or Black (K) 2x6 Overlay: Stainless (S) or Black Illuminated (I)

<u>Part No.</u>	<u>Description</u>
K1-34S	K1, 12 Pad 3x4 Stainless
K1-34K	K1, 12 Pad 3x4 Black
K1-26S	K1, Thinline 2x6 Stainless
K1-26I	K1, Thinline 2x6 Black



Keyless IP



Web Browser

Single Door Web Based Access Control System

- 1,000 User (Pin or Card)
- 12-16VDC In/Out
- 2 SPDT Relays (2A @ 30VDC)
- 5,000 Stored Audit Events
- 8 Programmable Schedules
- Managed via standard web browser
- DHCP or Static IP networks
- 3x4 Bezel: Stainless (S) or Black (K) 2x6 Overlay: Stainless (S) or Black (I)
- 802.3af PoE (Power Over Ethernet)
- Keypad, Proximity, Smart Card or Combination Keypad/Card Reader
- Browser "Door Dashboard" accesses remote door commands, status, alarms and recent events.

<u>Part No.</u>	<u>Description</u>
KIP-34S	Keyless IP, 12 Pad 3x4 Stainless Keypad
KIPRX-2	Keyless IP, RoxProx, Single Gang Globe
KIP-26S	Keyless IP, Thinline 2x6 Stainless Keypad

Additional system configurations available



» For multiple door Keyless IP Access Control Systems, contact Essex at 1-800-KEYLESS

Accessories

Stainless Spy Proof Housing



The Stainless Steel Spy Proof Housing provides illumination and serves to limit the view of an unwelcome onlooker.

- 5½" x 3½" x 1" to 2¼"
- Long Lasting LED's

<u>Part No.</u>	<u>Description</u>
SH-34SI-5	5VDC Illuminated Housing
SH-34SI-12	12VDC Illuminated Housing

Mullion Spacer Ring



The surface mount spacer ring is designed to simplify mullion mount installations. The spacer ring is constructed of black anodized aluminum. For use with narrow PEB, iRox, RoxProx and Hand-E-Wave.

<u>Part No.</u>	<u>Description</u>
PRXSR	Mullion spacer ring

Stainless Back Box

The Stainless Steel Back Box solves various installation challenges. For use with 3x4 keypads and single gang iRox and RoxProx readers & switches.

- 5 ¾" x 3 ¾" x ½" to 1¾"
- Conduit knockout

<u>Part No.</u>	<u>Description</u>
BAK BOX-SGS	Single Gang Back Box

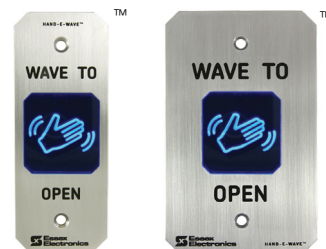


No Touch Switches

Hand-E-Wave™

Hand-E-Wave is a rugged hands-free switch with advanced 24GHz Doppler radar technology. Ideal for use in sterile environments (i.e. hospitals, clean rooms and food processing plants) Hand-E-Wave's no touch activation reduces the spread of bacteria and infectious diseases.

- Power Requirements: 5VDC or 12–24VAC/DC*
- One SPDT Relay, 2A 30VDC Resistive, ½A 125VAC
- Adjustable detection range: 2 to 24 inches



HEW-1

HEW-2



HEW-6B

Custom Graphics

Part No.	Description
HEW-1	Narrow Style Hand-E-Wave™ Switch, Stainless Steel Faceplate
HEW-1B	Narrow Style Hand-E-Wave™ Switch, Black Aluminum Faceplate
HEW-1W	Narrow Style Hand-E-Wave™ Switch, White Powder coat Faceplate
HEW-2	U.S. Single Gang Hand-E-Wave™ Switch, Stainless Steel Faceplate
HEW-2B	U.S. Single Gang Hand-E-Wave™ Switch, Black Aluminum Faceplate
HEW-2W	U.S. Single Gang Hand-E-Wave™ Switch, White Powdercoat Faceplate
HEW-3	U.S. Double Gang Hand-E-Wave™ Switch, Stainless Steel Faceplate
HEW-3B	U.S. Double Gang Hand-E-Wave™ Switch, Black Aluminum Faceplate
HEW-3W	U.S. Double Gang Hand-E-Wave™ Switch, White Powdercoat Faceplate
HEW-6	6" Round Hand-E-Wave™ Switch, Stainless Steel Faceplate
HEW-6B	6" Round Hand-E-Wave™ Switch, Black Aluminum Faceplate
HEW-6W	6" Round Hand-E-Wave™ Switch, White Powdercoat Faceplate

Piezoelectric Touch Switches

Hand-E-Tap® and the PEB Series are heavy duty, stainless steel, configurable REX devices designed to operate in various high use, harsh and vandal prone environments. All Essex Touch Switches are built with solid-state Piezoelectric Switch technology.

Hand-E-Tap® Series

- Power Requirements: 12–24VAC/DC*
- One Output: 1SPDT Relay (8A @ 30VDC, 125 VAC)
- Toggle or Adjustable Output Time: 1 to 60 seconds
- Dimensions: Single gang 5½" x 3¾" x 1"

The Hand-E-Tap Series can be customized with laser marked graphics, text, symbols or logos.



PHSS1-US



PHSK2-US



Part No.	Description
PHSS1-US	Hand-E-Tap Access Switch, ADA Wheelchair Icon, Stainless
PHSK2-US	Hand-E-Tap Access Switch, "Push to Open", Black Bezel

PEB Series

- Power Requirements: 12–24VDC*
- Two Outputs: 1 N/O, 1 N/C (2A 30VDC Resistive, ½A 125 VAC)
- Adjustable Output Time: 1 to 40 seconds
- Dimensions: Single gang 4 ½" x 2 ¾" x 1 ¼" Narrow 4 ½" x 1 ¾" x 1 ¼"

Part No.	Description	Faceplate Graphics
PEBSS2-US	U.S. Single	"PUSH TO EXIT"
PEBSS6-US	U.S. Single	"PUSH TO OPEN"
PEBSSN2	Narrow Switch	"PUSH TO EXIT"
PEBSSN6	Narrow Switch	"PUSH TO OPEN"



PEBSSN2



PEBSS2-US



All PEB Series feature field selectable illumination. Brilliant red, vibrant green or no illumination can be selected for standby and switch activation status

***Important Note:** Essex REX devices will not operate with <11VDC. Backup power (i.e. UPS) is required for operation during a power interruption.

