



Part Number(s): IRX-1S, IRX-2S, IRXP-1S, IRXP-2S, IRX-1B, IRX-2B, IRXP-1B, IRXP-2B

Output: 26 Bit Wiegand or 37 Bit Wiegand Open Format

Voltage(s): 5 VDC, +/- 0.1V 20mA 12 VDC, +/- 3.0V 20mA

Temperature: -40° C to +70° C (-40° F to +160° F)

DATA 1 and DATA 0 signals are open collector outputs with 2.2K pull-ups to the internal +5V. The data is sent at 1 msec per bit with a pulse duration of 50 usec. An annunciator beeps with each card read. When the LED control input is pulled low, the GREEN LED will be on and the BLUE LED will be off. When the input goes high the BLUE LED is on and the GREEN LED is off. The LED that is illuminated will blink off with every card read. The LED control input is pulled to the internal +5V with a 2.2K resistor.

The following WIEGAND output is sent each time a card is read:

P S S S S S S S S N N N N N N N N N N N N N N N N N P

BIT 1 2 9 10 25 26

BIT 1 is an even parity for the following 12 bits. The sum of bits 1-13 is even.

BITS 2-9 are the SITE CODE, part of the card data.

BITS 10-25 This is the card number read.

Leading 0's are added as required. Bit 10 is most significant.

BIT 26 is an odd parity over the previous 12 bits. The sum of bits 14-26 is odd.

Example: Site Code of 004 and a card number of 123 read 1 0 0 0 0 0 1 0 0 0 0 0 0 0 0 0 0 1 1 1 1 0 1 1 1

The following card formats are supported;

iClass
iClass SE/SR
iClass Seos
Mifare Classic 1K/4K & SE
Mifare Mini
Mifare Ultra Light
Mifare Desfire
FeliCa
CEPAS

Plus a number of other formats, contact
Essex Electronics for details

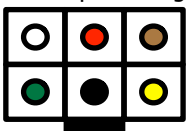
For IRXP models, the following Prox technologies are supported;

HID Prox
Indala Prox
EM4100
EM4102
EM4200
EM4305
EM4450
FDX-B
T5557
T5567
AWID Prox



Red - Input voltage

White - Data 1, do
not apply voltage
Green - Data 0, do
not apply voltage

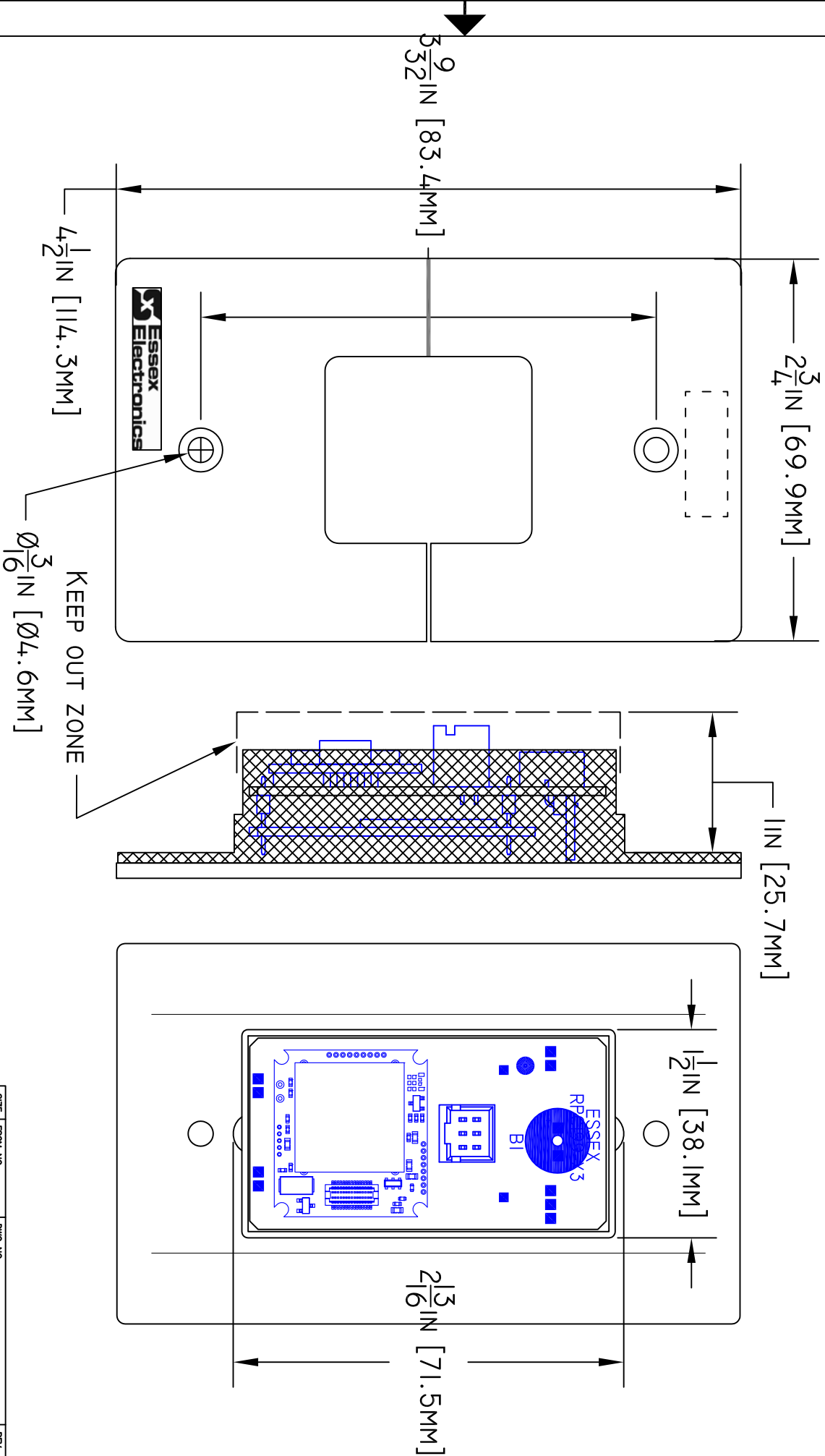


Black - Ground

Brown - LED control, do
not apply voltage
Yellow - Audio control,
do not apply voltage

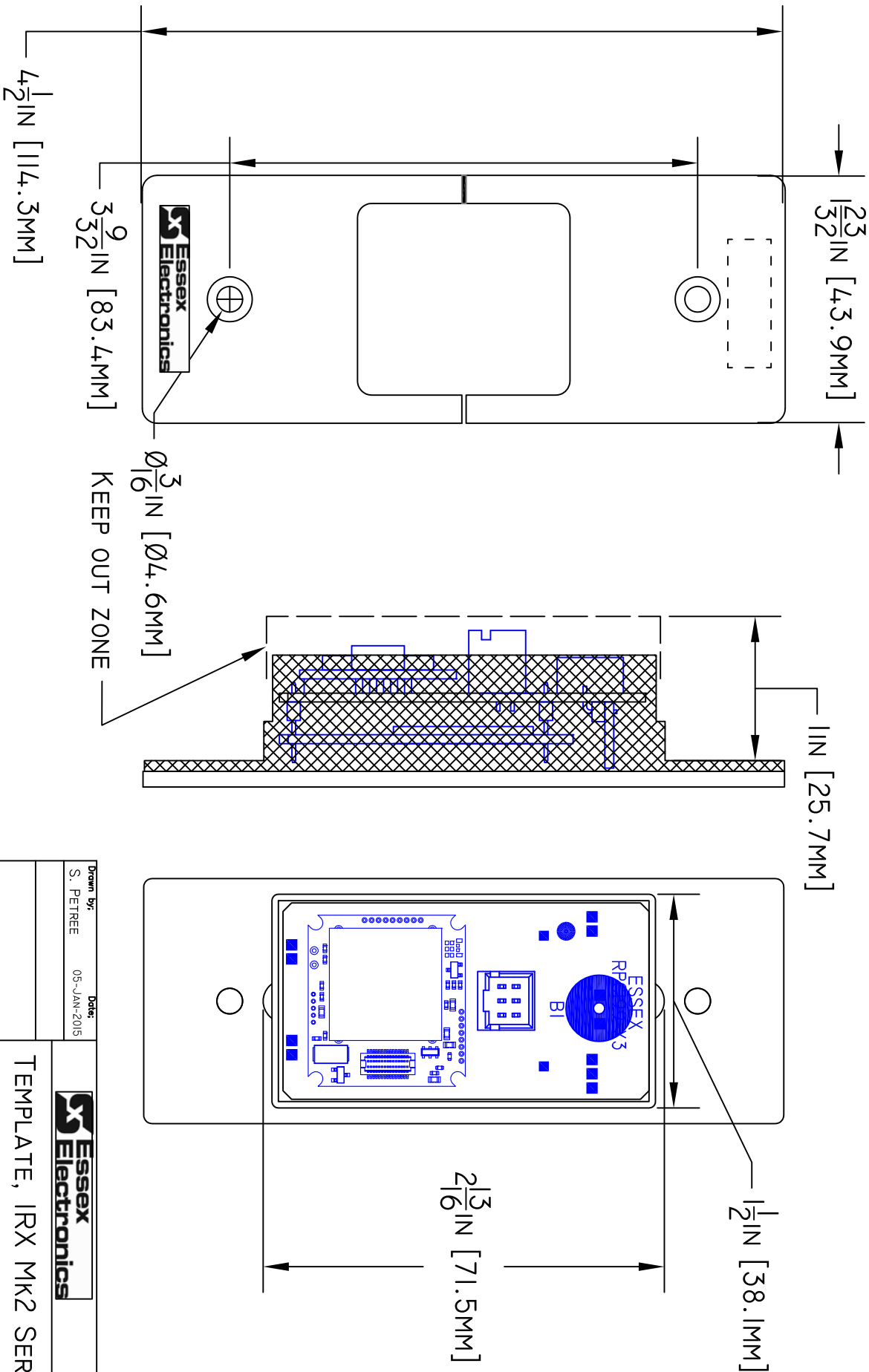
iRox Wiring:


| | |
|--------|---------------------------------------------------|
| Red | +5V or 12V DC |
| Black | DC Ground |
| White | Data 1 |
| Green | Data 0 |
| Brown | LED Control, floating = BLUE, grounded = GREEN |
| Yellow | Audio Control, floating = off, grounded = beep |



| SIZE | FSCM NO. | DWG NO. | REV |
|-------|----------|-------------|--------------|
| A | | RTL26 | B |
| SCALE | 1:1 | RTL26-B.DWG | SHEET 2 OF 2 |

| REVISIONS | | | | |
|-----------|-----|---------------------|-------------|----------|
| ZONE | REV | DESCRIPTION | DATE | APPROVED |
| | A | INITIAL RELEASE | 09-MAY-2018 | SMP |
| | B | CHANGED FACE PLATES | 25-MAY-2021 | SMP |



| | | | |
|-------------------------------------------------------------------------------------|-----------|-------------|--------------|
| Drawn by: | S. PETREE | Date: | 05-JAN-2015 |
| | | | |
| | | | |
| TEMPLATE, IRX MK2 SERIES | | | |
|  | | | |
| | | | |
| SIZE | FSCM NO. | DWG NO. | REV |
| A | | RTL26 | B |
| SCALE | 1:1 | RTL26-B.DWG | SHEET 1 OF 2 |
| IRX-1S, IRXP-2S, IRX-1B, IRXP-2B | | | |